

Scenic Rim

MEDIA KIT & TRADE MANUAL

2026



INSIDE

- 3 Why Scenic Rim
- 4 About the Scenic Rim
- 6 Region Snapshot
- 8 Scenic Rim Events
- 9 Things to Do

REGIONS

- 11 Beaudesert & Surrounds
- 12 Boonah & Surrounds
- 13 Canungra & Beechmont
- 14 Kalbar and Harrisville
- 15 Kooralbyn
- 16 Mt Barney and Rathdowney
- 17 Tamborine
- 18 The Lost World

GOLD MEMBERS

- 20 Australian Outback Opals
- 21 Bearded Dragon Hotel
- 22 Binna Burra Mountain Lodge
- 23 Cauldron Distillery
- 24 Country Mile Escape

- 25 Happitat
- 26 Mt French Lodge
- 27 My Country Escape
- 28 Northview Highlands
- 29 Royal Harrisville Hotel
- 30 Sarabah Estate Vineyard
- 31 Scenic Rim Adventure Park
- 32 St Bernards Hotel
- 33 Summerland Camels
- 34 Tamborine Mountain Distillery
- 35 Tamborine Mountain Glades
- 36 The Kooralbyn Valley
- 37 Tuckeroo Cottages & Gardens

SUGGESTED ITINERARIES

- 56 2 night itinerary - The Cheese Pleaser
- 58 3 night itinerary - Wonders of Life
- 60 4 night itinerary - The Flourishing Natural World
- 63 Contact details

WELCOME TO OUR COUNTRY

As you cross the ancient and abundant landscape of the Scenic Rim, we ask that you acknowledge and pay respect to the traditional custodians of the countries travelled - The Yugambeh and Jagera language groups of the Wangerriburra to the East, the Mununjali in the centre and the Urgurapul to the West, in whose ancestors' footsteps we tread today.

Why choose

THE SCENIC RIM

Welcome to the Scenic Rim where you will find spectacular natural beauty and sweeping valleys and mountain ranges, along with our friendly, relaxed country lifestyle and award-winning local produce.

Our motto has always been to make our visitors feel on top of the world. Sharing our spectacular landscapes, six national parks, World Heritage-listed Gondwana Rainforests, eco-adventures, fresh local produce, wines and beverages, and colourful characters has won us the most amazing accolade – one of Lonely Planet's Top 10 regions in the world to visit in 2022. Come and feel what award-winning means.

The Scenic Rim is a year-round destination brimming with foodie experiences, outdoor activities, watersports, cultural pursuits, eco escapes and tourist attractions that invite you to hit refresh in pristine natural surrounds.

Framed by impressive volcanic mountains dating back millions of years, this vast region traverses epic peaks and valleys, verdant rainforests and fertile farmland.

The Scenic Rim is where you'll discover Australia's most accessible World Heritage-listed rainforests, six national parks and unfiltered vistas at every turn, as well as our welcoming rural friendliness in charming country towns.

Ripe for road-tripping adventure and longer stays, the Scenic Rim is just 80km or an hour's drive from Brisbane and the Gold Coast in South-East Queensland.

Full of vibrant communities, local characters and plenty of things to see and do, it's no wonder the Scenic Rim was listed as one of the world's Top 10 Regions in Lonely Planet's Best in Travel 2022.

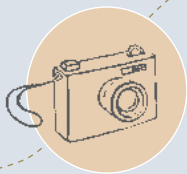


Scenic Rim region



In the Scenic Rim there is something new to discover around every corner, at the end of every country road. With regional towns forming population centres and charming country villages dotting the stunning expanse of mountains, lakes, creeks and parks, it's easy to uncover hidden gems you will love and those that will surprise you.





DRIVE TIMES

Brisbane – Scenic Rim	1 hour
Gold Coast – Scenic Rim	45 mins
Toowoomba – Scenic Rim	2 hours
Sunshine Coast – Scenic Rim	2 hours

The Scenic Rim is less than 60 minutes drive south west of Brisbane, and a similar time west of the Gold Coast. The region itself is an expanse of more than 4,000 square kilometres, three times the size of Brisbane.

ORIGIN

The Scenic Rim was named by adventurer, naturalist and tourism pioneer, Arthur Groom in the mid 1900s. He was describing the chain of mountains around the valleys between Brisbane and Tamborine Mountain and then it was known as the Scenic Rim.

INDIGENOUS MEANING

The original inhabitants of the Scenic Rim area were the Mununjali, Yugambeh and Ugarapul Aboriginal people.



Region snapshot



FAMILIES
55% OF VISITORS



REGIONAL AREA
4,243KM



COUPLES
35% OF VISITORS



PERFECT PICNIC SEASON
JUNE – SEPTEMBER



GROUPS
20% OF VISITORS



TEMPERATURE
SUBTROPICAL



17

WINERIES, BREWERIES
& DISTILLERIES



26

FARM GATE
STOPS



7

FLOWER
FARMS



20+

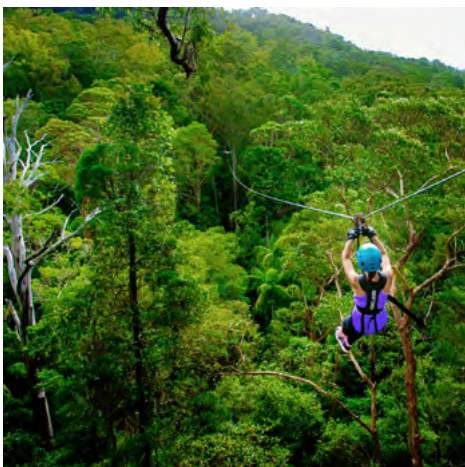
WEDDING
VENUES



ARATAULA • BEAUDESERT • BEECHMONT • BOONAH • CANUNGRA
HARRISVILLE • KALBAR • KOORALBYN • TAMBORINE • THE LOST WORLD

“The thing that has struck me about the Scenic Rim are its people. The hospitality you’ll experience is off-the-scale ... the community will invite you in and make you feel like a part of the family. It’s a region that’s a shining example of a connected community”

Lonely Planet’s Chris Zeiher



Scenic Rim Events



Scenic Rim
Farm Gate Trail
events are run
seasonally.

Regular updates via
social media or
destinationsscenicrim.com

MARCH

Scenic Rim Farm Gate Trail

destinationsscenicrim.com/farm-gate-trail

MAY

Kalbar Sunflower Festival

kalbarsunflowers.com.au/sunflower-festival

Tamborine Arts Trail

tamborinemountain.art

JUNE

Scenic Rim Eat Local Month

eatlocalmonth.com.au

Scenic Rim Agricultural Expo

scenicrimagriculturalexpo.com

Scenic Rim Clydesdale Spectacular

clydesdalespectacular.com.au

Scenic Rim Wedding Event

destinationsscenicrim.com/weddings

JULY

Scenic Rim Farm Gate Trail

destinationsscenicrim.com/farm-gate-trail

AUGUST

Southern Realm Festival Boonah

[instagram.com/southernrealmfest](https://www.instagram.com/southernrealmfest)



Things To Do

With spectacular natural beauty, sweeping valleys and mountain ranges, the Scenic Rim is a year-round destination brimming with foodie experiences, outdoor adventure, cultural pursuits, eco escapes and visitor attractions.

From the myriad of wineries and art galleries to expansive bushwalking tracks, state-of-the-art farm experiences to our friendly country charm, the Scenic Rim

region opens its arms to you. Spend your days trekking through heritage-listed national parks or put your heels on for a vineyard excursion. Whatever way the map takes, it's all here for you.

Be immersed in an overwhelming array of experiences, activities and delectable local produce, carefully designed to intrigue and excite.

Make the most of your Scenic Rim adventure! Find all of the latest happenings at Destination Scenic Rim.



destinationscenicrim.com/events

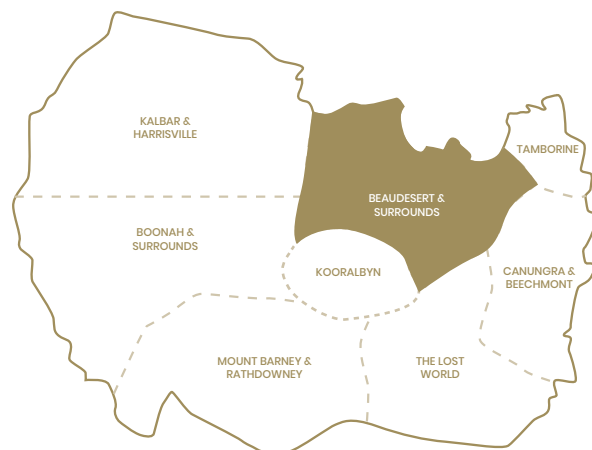
Explore the Scenic Rim regions

Whether you're visiting for the day or staying for a week, the Scenic Rim is a destination like no other. From 4WD adventures and fishing expeditions to bushwalking and bird watching in the pristine national parks, the Scenic Rim offers something special for every explorer.



BEAUDESERT & SURROUNDS

Sky-high views, honey sweet farm stops, handmade deliciousness and buildings with stories that are hundreds of years old. Whether behind the wheel, armed with a paddle or a knife and fork in hand, there are plenty of ways to make the most of every gem.



Beaadesert is the gateway to the region's natural attractions. its vibrant commercial centre is the perfect location to kickstart your Scenic Rim experience.

Building on its agricultural roots, the town is a farming and equine hub with a bustling CBD that hosts an art gallery, museum and cultural centre. Kooralbyn is an easy 25-minute drive from Beaadesert – a hinterland paradise tucked into a secluded

valley with a tranquil village for a relaxing getaway.

Food is front and centre with charming country pubs, cafes as well as The Overflow Estate 1895 winery and restaurant set in a stunning location. Visit Towri Sheep Cheeses to learn the art of cheesemaking, browse Beaadesert and Kooralbyn markets for fresh food or take a stroll down the main street to treat yourself to coffee.

The area is also a launchpad for outdoor activities and wildlife spotting with its close proximity to Mt Barney and Mt Maroon, Lake Wyaralong and a great range of 4WD and mountain biking trails. If a spot of golf takes your fancy, there's an expansive golf course only a stone's throw from the town centre.

Region Highlights

Bustling town centre

Country pubs



Local produce

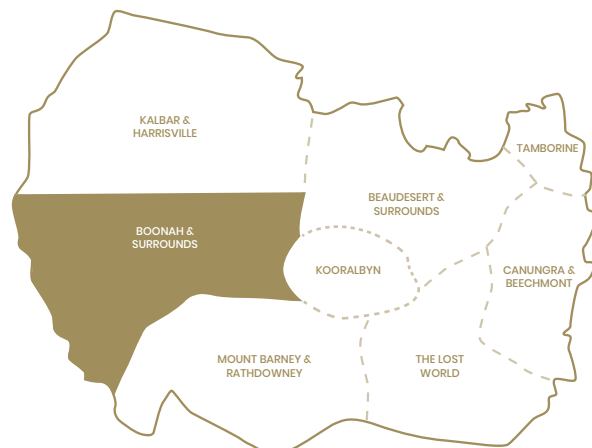
Markets



SCENIC RIM REGIONS

BOONAH & SURROUNDS

Nestled among heritage-listed areas and surrounded by passionate producers, Boonah is the perfect base for a Scenic Rim adventure. Discover something new around every corner.



A vibrant town with rural roots, Boonah is located in the Scenic Rim's west around 1.5 hour's drive from Brisbane and the Gold Coast. With Moogerah Peaks, Main Range National Parks, Lake Moogerah and Maroon on its doorstep, Boonah is the ideal launchpad for outdoor adventure.

Most roads lead to the water where you can dive into

swimming, fishing, stand-up paddleboarding and kayaking or power up your jet-ski or boat. Pitch a tent by the water, embark on a bushwalk, tacklerock climbing in the National Parks or take a scenic flight and test your mettle at the QLD Moto Park.

Local food, wine and brews are also on the menu – visit Scenic Rim Brewery and Kooroomba

Vineyard & Lavender Farm for delicious meals and drinks with a side of breathtaking views.

Nearby Aratula on the Cunningham Highway is a popular roadside rest stop for baked goods and homestyle food after your active adventures.

Region Highlights

Local produce

Beautiful lakes



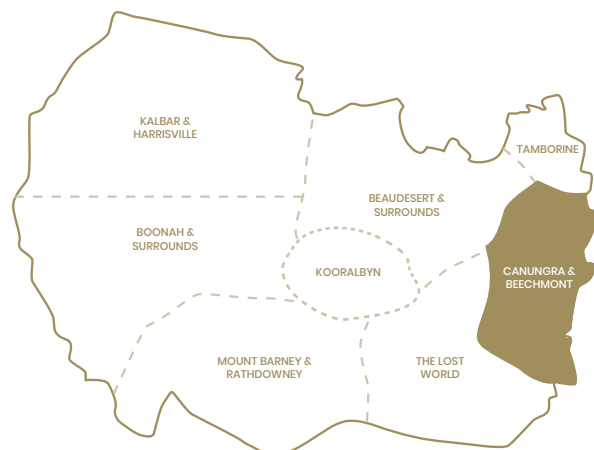
Colourful country town

Adventure



CANUNGRA & BEECHMONT

Here you'll discover legendary rainforest retreats, a quaint village with eclectic country stores where you'll be sure to find a special piece of treasure. Canungra has a special magic in its natural surrounds, it's like an elixir for wellbeing.



Cocooned by nature, the historic village settlement of Canungra and neighbouring hilltop oasis of Beechmont derive their energy and activity as the entry point for nearby Lamington National Park.

Lamington National Park, O'Reilly's Rainforest Retreat and Binna Burra Lodge draw a steady stream of weekend travellers who stay, play and explore lush prehistoric rainforests with

towering trees, expansive views, extensive walking tracks and outstanding biodiversity.

From Canungra, gain a bird's-eye view of the mountains, pastures and rainforest on a hot-air balloon or hang-glider, opt for a panoramic vista over a picnic or relaxing lunch at the awardwinning O'Reilly's Canungra Valley Vineyard. In the village centre, enjoy a pub meal

at the family-friendly Canungra Hotel and browse the diverse mix of boutique retailers.

Whether you're seeking heart-pumping adventurous activities or looking for a beautiful spot to quench your culinary thirst, you'll be spoilt for choice in this lovely town, where character and charm blend seamlessly.

Region Highlights

Road trip



Wonderful wineries



National Park



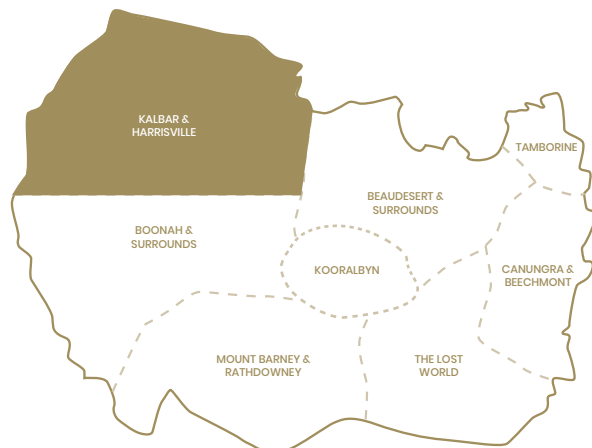
Local produce



SCENIC RIM REGIONS

KALBAR & HARRISVILLE

Kalbar formerly known as Englesberg is a charming town located in the picturesque Fassifern Valley. Nestled at the foothills of the scenic Great Dividing Range, Kalbar is renowned for its stunning natural beauty and rich agricultural heritage.



The fertile soil and favorable climate of the Scenic Rim are ideal for farming, particularly for growing vegetables and flowers. The town is renowned for its fresh produce, and locals and visitors alike can enjoy the delicious flavors at the local cafes and pubs.

The Scenic Rim's northern hub of Kalbar, Harrisville, Peak Crossing and Roadvale is sure to satisfy your cravings for fresh fare and country air. Serving up generous quantities

of gourmet goodies, foodie finds and dining destinations, don't forget to pack an adventurous appetite.

Settled by German immigrant farmers in the 1870s, Kalbar's pioneering heritage can be seen in historic buildings and welcoming cafes, pubs, providores and bakeries that offer hearty homestyle food with locally grown produce. Smaller historic towns nearby include Roadvale, Harrisville

and Peak Crossing, each with its own pub and main street.

Summer Land Camels near Harrisville is a must-visit to see the resident camels and wander the charming homestead, shop and farm. For specialty gifts, local produce and handmade collectibles, Kalbar's main business area is brimming with character, including Postmaster's Sweets, located in the Post Office, and the Scenic Rim Farm Shop & Café.

Region Highlights

Adventure



Wedding destination



Road trip

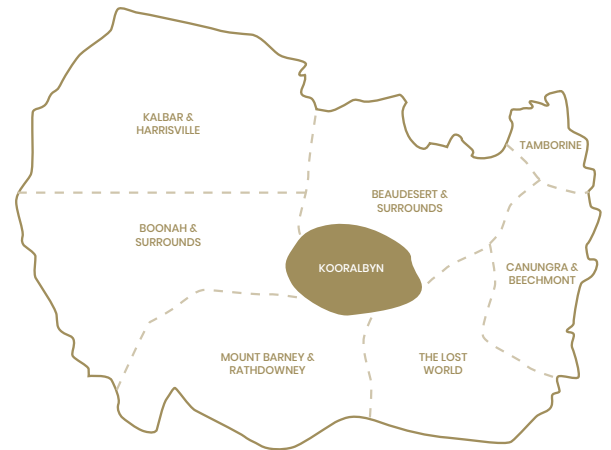


Markets



KOORALBYN

Kooralbyn is a destination that offers a perfect blend of natural beauty, outdoor adventure, and cultural experiences. Whether you are seeking a peaceful retreat or an adrenaline-fueled escape, this hidden gem in Queensland has something to offer everyone.



So, if you are looking to immerse yourself in the scenic landscape and create unforgettable memories, Kooralbyn is a destination that is worth exploring.

For those seeking adventure, Kooralbyn is a haven for outdoor activities. The Kooralbyn Valley

boasts a championship golf course, attracting golf enthusiasts from around the world. The undulating greens and stunning vistas provide an unforgettable golfing experience.

Additionally, the region offers opportunities for four wheel

driving, mountain biking, and bushwalking, allowing visitors to immerse themselves in the area's natural beauty while enjoying their favourite pastimes.

Region Highlights

Adventure



Road trip



Wedding destination



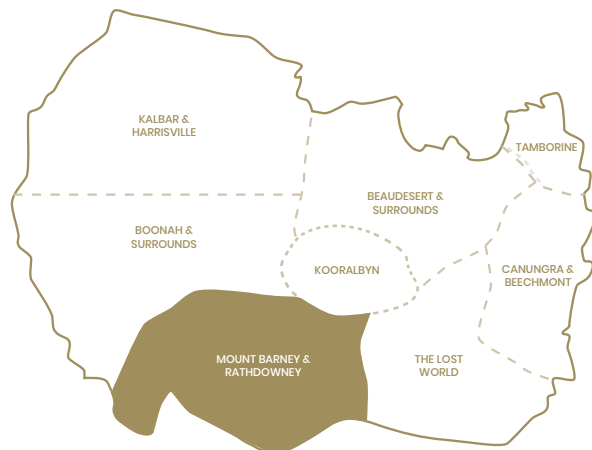
Markets



SCENIC RIM REGIONS

MOUNT BARNEY & RATHDOWNNEY

Experience rugged mountains and epic heights one moment and then the genuine warmth of smiles down the main street of country villages that exude charm. There's action for those who want thrill and peace for those who need to stop.



Rathdownney is in the Scenic Rim's south, just 32km from Beaudesert and provides access to the many impressive walking and climbing tracks in nearby Mount Barney National Park.

The tiny township occupies lush pastoral land and vast open spaces at the base of two majestic mountains, hosting monthly markets and food options such as the historic

Rathdownney Hotel, cafés and restaurants.

The World Heritage-listed Mount Barney National Park is surrounded by valleys, caves, rockpools and woodland forest, primed for outdoor adventure and nature experiences. The designated wilderness park is marked by seven mountains, including Mt Barney, Queensland's fourth-highest

peak that offers some of the Scenic Rim's most challenging walks and pristine bushland teeming with wildlife.

There are plenty of family-friendly accommodation options available from camping to glamping, farm stays and lodge cabins, allowing you to stay and explore this outdoors hub at your leisure.

Region Highlights

Adventure

National Park



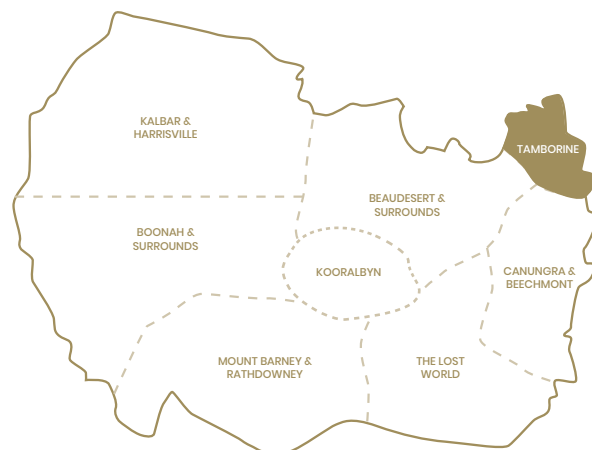
Road trip

Markets



TAMBORINE

Welcome to a land of lush green mountains that will have you longing to get your head lost in the clouds. Just a one-hour drive from Brisbane or 45 minutes from the Gold Coast, Tamborine Mountain is lovingly referred to as the green behind the gold.



Tucked into the hinterland just 20 minutes' drive from the Gold Coast, Tamborine Mountain is truly a hidden gem, surrounded by boutique wineries, historic pubs, quirky gift shops, art galleries and natural wonders.

The village feel envelops you like a warm hug. The main hub hosts a strip of characterful shops, restaurants, cafes, wineries and art galleries, making it easy to visit multiple sites on your trip. Stop at one of the many

cellar doors, call into Tamborine Mountain Distillery for liqueur tasting or take a crop-to-cup tour at Tamborine Mountain Coffee Plantation.

The meandering country roads are a pleasure to motor along, stopping at elevated lookouts with breathtaking views from the vantage point of 550m above sea level.

For sensory respite in serene surrounds, head to Tamborine

National Park, wander the tropical-meets-temperate plant displays at the Tamborine Mountain Regional Botanic Gardens or experience family-friendly adventures at Thunderbird Park. For adventurers who love a view, get a top-down vista from the lush rainforest canopy at the Tamborine Rainforest Skywalk and TreeTop Challenge or simply stay a little longer at the stylish Tamborine Mountain Glades.

Region Highlights

Bustling town centre



Natural wonders



Great food and drink



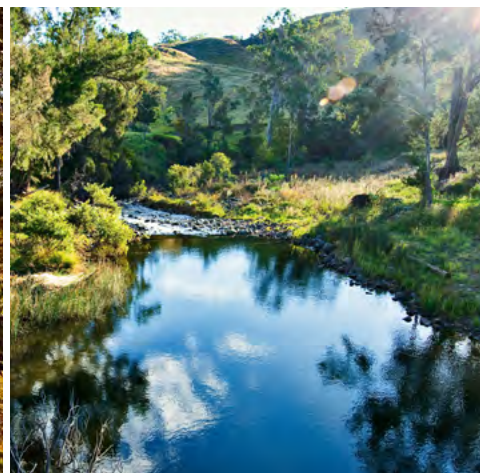
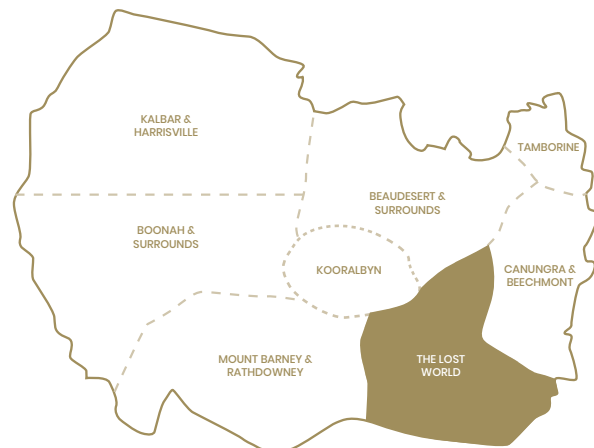
Amazing attraction



SCENIC RIM REGIONS

THE LOST WORLD

The Lost World is a hidden plateau, a green shelf on Razorback Mountain, found long ago by the adventurous O'Reillys who imagined that anything could have remained hidden on this magical step between mountain and sky.



Overlooked by the dramatic Razorback Mountain and Lamington Plateau, the Lost World occupies enchanted valleys populated by tangled forests, verdant meadows, wild rivers, mesmerising rock pools and rare wildlife. A true rugged wilderness, this Scenic Rim gem offers the chance to disconnect from life and engage with nature.

Slow the pace along the scenic Lost World Tourist Drive through

the Kerry Valley, Lost World, Lamington Gorge and Christmas Creek, and get into farm-based activities at Tommerup's Dairy – open by appointment, on regular open days or as part of the Farm Gate Trails – where you can meet the menagerie of animals and stock up on farm-fresh produce.

Camp or stay in Lost World accommodation from charming cabins to historic homesteads. Gain access to private trails

and pristine swimming holes and try your hand at skills such as stockwhip-cracking and boomerang throwing. Christmas Creek, on the tip of Lamington National Park, also offers an enchanting immersive experience in nature, glamping in luxe safari tents at Nightfall Camp.

Region Highlights

Secluded beauty

National Park



Farm stay

Prestine rockpools



Discover the Scenic Rim members

Our Members are a collection of local businesses that want to share their slice of the Scenic Rim while helping grow vibrant and sustainable tourism. From farmers, winemakers and chefs to B&B owners and publicans, this is a group of passionate locals who are ready to welcome you to this unique destination.



Australian Outback Opals



DESCRIPTION

Australian Outback Opals cut opals on the premises at Tamborine Mountain. The staff are welcoming and friendly and always happy to share their knowledge. Their selection of opals and opal jewellery is impressive, from small value items right up to the more expensive ones.

There is something for everyone who enjoys opals. They offer the most extensive diverse range of colour, pattern, variety and finest gem quality opals at True Market Value. Their selection of exquisite opal ranges from specimens to the investment gem opal that any discerning opal collector would wish to own.

Their stock includes all types of Australian Opal: the elusive Black and Crystal Opal from Lightning Ridge; White and Crystal Opal from South Australia; the unique free form Boulder Opal from Queensland.

They now offer a new range of Australian Sapphire Jewellery, from the traditional deep royal blues to the fancy stone colours such as pinks, greens and orange.

Opal Colour is a matter of personal choice with red being the rarest and most valuable, followed by gold, purple, green and blue.

Opal is believed to bring Love, Luck and Happiness!

Once you've selected your special piece, treat yourself to a gelato or coffee next door.



- Cut on the premises in Tamborine Mountain
- An extensive diverse range of Opals
- A range of Australian Sapphire Jewellery

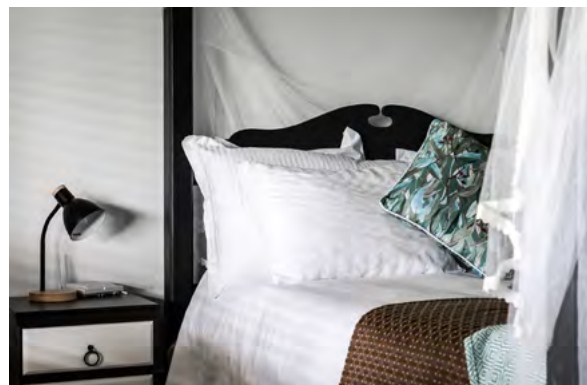
07 5545 0888

info@outbackopals.com.au

outbackopals.com.au



Bearded Dragon Hotel



DESCRIPTION

Experience the best of Australia with a True Blue Aussie Adventure at Bearded Dragon Hotel. Our all-day dining restaurant serves delicious meals from breakfast till late, ensuring you can enjoy a satisfying meal whenever you visit. Immerse yourself in the charming country atmosphere of our venue, perfect for weddings, events, and conferences of all sizes. Discover our recently refurbished 18 room accommodations, featuring spa suites for added luxury. Don't miss out on the live music, craft beers, cocktails, and the opportunity to visit our adorable miniature donkeys and baby farmyard animals. There's so much more to explore at Bearded Dragon Hotel!

LOCATION

Nestled in the heart of the Scenic Rim, Bearded Dragon Hotel is conveniently located under an hour from Brisbane and the Gold Coast. Look for the iconic 'big' windmill as you arrive.

FACILITIES/FEATURES

Indulge in live music and exciting events while surrounded by the charming pub-in-the-paddock setting. Explore our collection of antiques and memorabilia, adding a unique touch to your experience. Our recently refurbished rooms exude country charm while offering all the comforts of the city, including excellent quality free WiFi. Kids will love the outdoor play area, and we have multiple event spaces to cater to your needs. Enjoy dining options at our restaurant, grab a drink at the bar, or stock up at our bottle shop.

TARGET MARKETS

At Bearded Dragon Hotel, we welcome couples, families, and groups of all sizes. Whether you're planning a special event, a wedding, a conference, or a business trip, we have you covered. We even accommodate large groups such as car clubs and offer unique event experiences.



- Wide selection of local and craft beers.
- All-day casual dining, delicious meals any time of the day.
- paddock-to-plate blackboards, with daily-changing specials.
- Stunnig views and a charming country vibe.

07 5543 6888

events@beardeddragon.com.au

beardeddragon.com.au



SCENIC RIM MEMBERS

Binna Burra Lodge



DESCRIPTION

Binna Burra is a world-class destination where breathtaking natural wonders await you. We take immense pride in being a cherished heritage-listed destination that offers unforgettable experiences, right here in Woonoongoora, Lamington National Park, Queensland, Australia.

We can't wait for you to explore our incredible facilities and accommodation. Get ready to be enchanted by our luxurious Tiny Wild Houses, designed to make you feel right at home amidst nature's embrace. Our Safari Tents and campsite offer a cosy and inviting setting for an unforgettable outdoor adventure. And, of course, our famous award-winning luxury Sky Lodge apartments are here to pamper you with unparalleled comfort and sophistication.

Binna Burra invites you to experience the warmth, beauty, and friendly hospitality that make us truly special.

LOCATION

Positioned 800 metres above sea level amidst sub-tropical rainforest, in the Gold Coast Hinterland, Binna Burra is centre stage to some of Australia's most spectacular natural features. The unique isolation provides the perfect escape from the stresses of everyday life and a chance to get back to basics, interact with nature and experience a freedom and sense of peace that few places can offer.

FACILITIES

Indulge your taste buds at the newly renovated Tea House Cafe and restaurant, where delicious cuisine is served in a truly magical atmosphere. For those wanting something a little more casual and cosy, stop by the Groom's Cottage Bushwalker's Bar for a sundowner or a tasty mountain meal, enjoyed on the heated terrace or inside by the fireplace.



- Discover tranquillity 800 meters above sea level in Woonoongoora - Lamington National Park.
- Tiny Wild Houses, Sky Lodge apartments, Safari Tents and Campsite
- Experience the warmth and friendly hospitality of Binna Burra's cherished heritage.

07 5533 3622

info@binnaburralodge.com.au

binnaburralodge.com.au



Cauldron Distillery



DESCRIPTION

Cauldron Distillery produces and serves unique Queensland inspired beverages from our award winning Five to Five Gin range, Barrel Aged Christmas Gin, Piano Rock Vermouth and Liqueurs. Enjoy a relaxing afternoon with family and friends (we are also pet friendly) on our 18 acre property with established vineyards whilst sipping on a G&T or a seasonal cocktail, listen to live music every Saturday and Sunday or play some lawn games. While visiting us why not participate in a number of experiences such as Distillery Tours, Gin Blending or Gin Making Classes.

LOCATION

Cauldron Distillery is proudly located in Scenic Rim in the Hartley Road Winery Precinct, Tamborine Mountain. Only an hour from Brisbane and just under an hour from the Gold Coast.

FACILITIES/FEATURES

Cauldron Distillery a working distillery. Set on an 18 acre property with an established vineyard, rolling terraces with plenty of space to relax. Plenty of parking to accommodate everyone.

TARGET MARKET

We can accommodate any size groups from couples, families, parties, car groups and weddings.



- Two self-contained cottages, each with a cozy fireplace.
- Disabled-access is available.
- View the heritage horse drawn implements.
- Feed the cows, chickens and horse.

07 5545 0156

hello@cauldrondistillery.com.au

cauldrondistillery.com.au



SCENIC RIM MEMBERS

Country Mile Escape



DESCRIPTION

Immerse yourself in ultimate seclusion at Country Mile Escape, with a vast 70-acres of property to explore. Take long walks at sunrise, meet the resident farm animals, and unwind by the fire pit at night. The two stylishly appointed studios are perfect for relaxing, complete with indoor fireplaces and kitchenettes. To top off this ultimate experience, treat yourself to a holistic wellness package.

LOCATION

The beauty of the Scenic Rim is easily felt at this countryside escape. Located in Canungra amongst picturesque rolling hills, the scenery on this 70-acre property will take your breath away.

FACILITIES

Enjoy the ebb and flow of farm life as you step away from reality and into relaxation. A glass of wine by the fire pit will have you basking in serenity. The modern self-contained studios allow you to completely immerse yourself in seclusion.

TARGET MARKETS

The perfect romantic getaway for couples, or a relaxing retreat for friends and family.



- Reset and recharge with Country Mile Wellness.
- Indulge in a nurturing warm holistic spa experience, and a whole new level of relaxation.

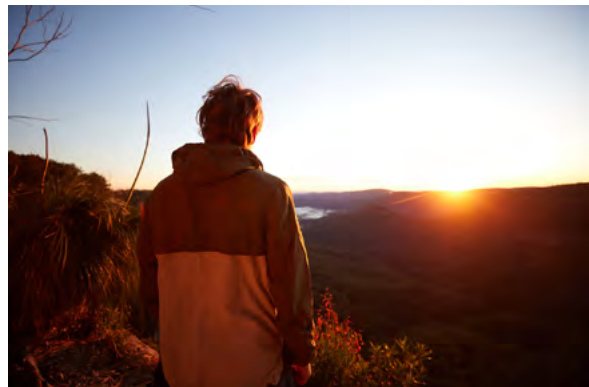
0419 090 246

trish@countrymileescape.com.au

countrymileescape.com.au



Happitat Adventure Parks



DESCRIPTION

Happitat is a world-first cliff park, based in the Binna Burra section of Lamington National Park, a UNESCO World Heritage Site in the Gold Coast hinterland.

Set 400 metres above the valley floor, on a 200 metre high cliff face, the sheer exposure to this elevation and it's majestic views immediately take your breath away.

Phase one of Happitat consists of three ziplines, including Australia's highest, via ferrata courses, tight rope sections and suspension bridges.

And, we're just getting started.

While the adventures on offer set Happitat apart, their true purpose is to reconnect us all. You'll create a deeper bond with nature by going beyond your fears to Find Happi.

LOCATION

Located in Lamington National Park and Binna Burra, Happitat is nestled in the heart of the lush Australian rainforest and surrounded by natural wonder at every turn.

Lamington National Park, renowned for its lush rainforests, ancient trees, and spectacular wildlife, is a UNESCO World Heritage Site.

HAPPITAT

- Mega Zipline - Australia's highest zipline! Soar above Lamington National Park.
- Via Ferrata - conquer the heights on this one of a kind adventure course.
- Cliff Conquerer - get ready to push your boundaries!

0476 501 788

findhappi@happitat.com.au

happitat.com.au



SCENIC RIM MEMBERS

Mt French Lodge



DESCRIPTION

Experience the epitome of luxury at Mount French Lodge, a serene mountain retreat nestled in the heart of the Scenic Rim. Only an hour's drive from Brisbane, this idyllic haven caters to group bookings of up to 16 guests, creating an unmatched experience for unforgettable weddings and special events with a capacity to accommodate up to 250 attendees. With a promise of absolute exclusivity and utmost privacy, Mount French Lodge ensures a stay that will be etched in your memory forever.

LOCATION

Mount French Lodge in the breathtaking Scenic Rim region, providing a serene and picturesque backdrop for your getaway. Situated just an hour's drive from Brisbane, this secluded mountain retreat offers a peaceful escape from the city while remaining easily accessible.

FACILITIES

At Mount French Lodge, every detail has been carefully curated to provide a luxurious and indulgent experience. The accommodation boasts beautifully appointed rooms with luxurious amenities, ensuring utmost comfort and relaxation. The locally sourced cuisine is a culinary delight, tantalizing your taste buds with delicious and flavourful dishes.

The lodge offers complete exclusivity to one group at a time, ensuring privacy and a sense of seclusion. The all-inclusive package option, featuring meals and alcohol, allows guests to fully indulge and savour their time at the lodge. Whether you're seeking a romantic weekend getaway, a corporate retreat, or a gathering of friends and family, Mount French Lodge offers a unique and unforgettable experience.

TARGET MARKET

Our high-end luxury retreat offers an exclusive haven for guests seeking an unparalleled escape into a world of refined tranquility.



MOUNT FRENCH LODGE

- At our location, you can explore various picnic spots, relax by the creek, have BBQ sessions, enjoy nature walks, and visit local attractions. Additionally, you have the option to take a yoga class, go on bushwalks, and participate in paint n
- sip classes to enhance your experience further.

0439 221 495

hello@mountfrench.com.au

mountfrenchlodge.com.au



My Country Escape



DESCRIPTION

My Country Escape is a phenomenally successful Fashion and Homewares boutique renowned in the Scenic Rim as a destination drawcard. Built in 1957, 29 Christie Street has character and ambience and is one of the Scenic Rim's oldest shop fronts, for the past seven years home to My Country Escape.

Distinctively recognised for its hero navy storefront in the heart of Canungra, My Country Escape stocks a myriad of Australian-owned and international brands including homewares, bedding and linens, women's and children's fashion, luxury beauty products, unique gifts, and designer jewellery.

Michelle and the team at My Country Escape believe in offering the absolute best in personal, thoughtful, friendly, old fashion service. Every customer that walks through the door is greeted with a smile and treated like a life-long friend.

Our mission is to ensure each customer's shopping experience is meaningful and memorable. It is not just about active sales; success is measured based on customer experiences and the loyalty of returning shoppers.

Our motto is Relax ... Browse ... Stay for a while.



- Enjoy a shopping experience with old fashion service.
- Shop exclusive local, Australian, and international brands.
- Enjoy the character and ambience of a beautiful country town.

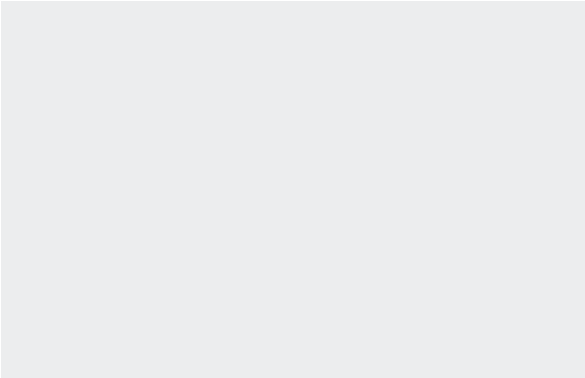
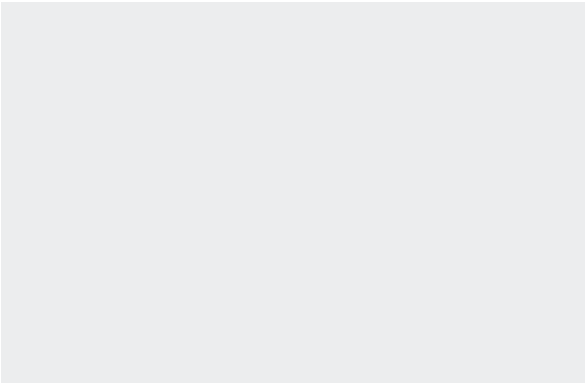
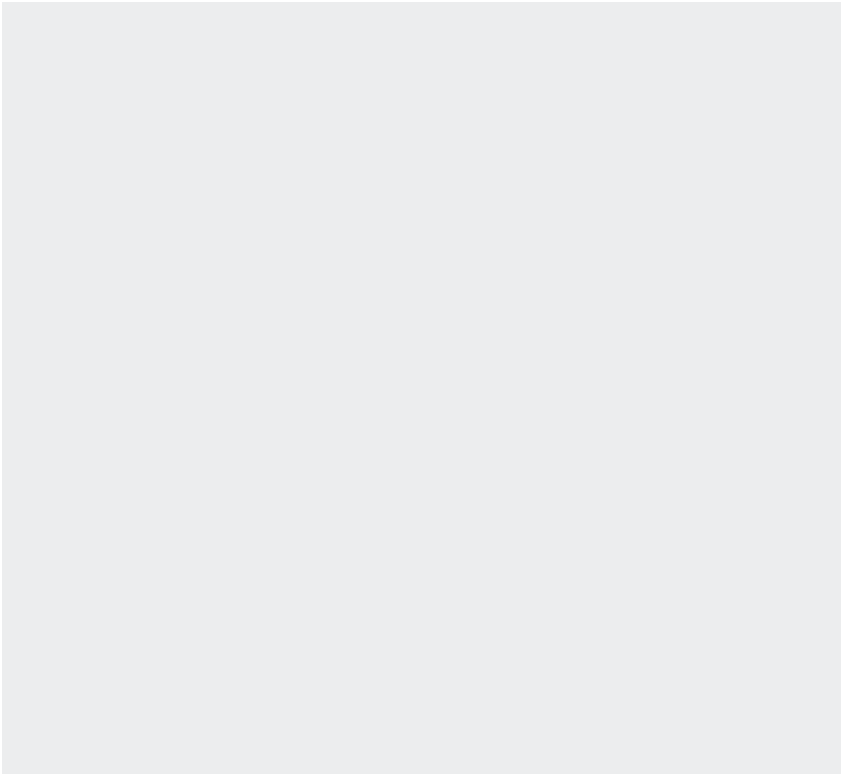
07 5543 4042

sales@mycountryescape.com.au

mycountryescape.com.au



Northview Highlands



DESCRIPTION

text here



- highlights

Phone 07

email

web



Royal Hotel Harrisville



DESCRIPTION

The Royal Hotel Harrisville is the oldest hotel within the Scenic Rim. Come & experience our country hospitality, delicious food, friendly service & quaint atmosphere. Surrounded by picturesque views, our historic Hotel is the perfect venue for couples, group bookings, family gatherings, clubs & seniors outings. Contact Hotel for more information.

LOCATION

Nestled in the heart of the Scenic Rim situated within the historic township of Harrisville. Just over an hour's drive from Brisbane & the Gold Coast. Enjoy a picturesque drive through the country on your way to our iconic Hotel.

FACILITIES

Ability to cater for small or large groups of people

Fully Air-conditioned restaurant with the charm of yesteryear.

Large outdoor undercover Deck suitable for larger groups, live entertainment or functions

Well maintained lawn area & camping facilities.

Admire our Heritage Train Carriages.

ROYAL HOTEL HARRISVILLE

- Engaging owners who can provide a history of the hotel, area & resident ghosts!
- Traditional Pub food and specialty dishes produced by a talented Head Chef.
- Relax & enjoy the tranquility of our well-maintained camping area (hotel patrons only)

07 546 71882

info@royalhotelharrisville.com.au

royalhotelharrisville.com.au



SCENIC RIM MEMBERS

Sarabah Estate Vineyard



DESCRIPTION

Experience the delightful array of attractions at our vineyard, including The Chalet Bistro serving “The Best Steak in the Scenic Rim,” as well as the opportunity for Vineyard Wine Tasting and interactions with friendly farm animals and alpacas. Our family-friendly country hospitality welcomes visitors every weekend, offering Very Good Gelato and Wood Fired Pizzas. Whether you’re a couple, a group, or a family, our vineyard is the perfect destination for weddings and special functions, complete with a boutique wedding venue and villa stay accommodation for a memorable experience.

LOCATION

Just over an hour’s drive from Brisbane and the Gold Coast, Sarabah Estate Vineyard is nestled in the Scenic Rim, just 15 minutes away from the township of Canungra.

TARGET MARKETS

The venue can accommodate couples, families, brides and grooms, photoshoot and production locations, wedding guests, and general interest groups.



- Outdoor events, including stunning ceremonies and dinner under the stars.
- Caters to dietary requirements, including vegan options.
- Enjoy Vineyard Views Wood Fire Pizzas at The Smoke and Vine Bar, and make group bookings in The Olive Grove.

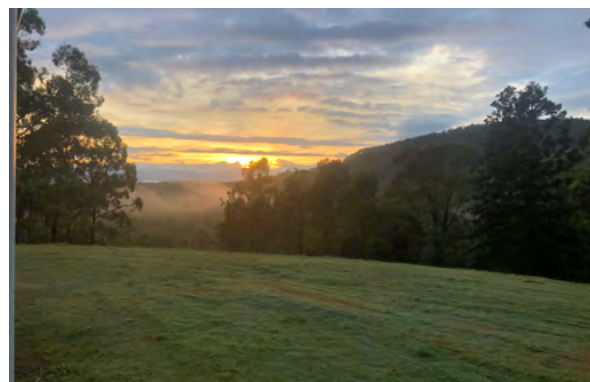
0409 274 314

wine@sarabahestate.com.au

arabahestate.com.au



Scenic Rim Adventure Park



DESCRIPTION

Scenic Rim Adventure Park offers a different camping experience from the mainstream campgrounds. Our 14 camp areas are divided into 56 individual sites scattered throughout the full 680-acre property. We have 28k's of specially designed 4x4 vehicle tracks to access most of these sites. Area campsite 1's and 14's we have kept for 2x2 and all-WD vehicles, caravan and motorhomes accessible.

LOCATION

Situated just over an hour's drive from Brisbane and the Gold Coast, near Rathdowney in the middle of the beautiful Scenic Rim Region. Some sites look East across the valleys to the Lamington National Parks viewing fantastic sun and moon rises.

FACILITIES/FEATURES

14 camping areas, 28 kilometres of 4x4 tracks from stock standard to highly modified road-registered vehicles. Harris Cottage with private closed yard, Bell Glamp tents, product launches.

TARGET MARKET

We accommodate people who want to get back to nature bush camping, singles, couples, families, general interest groups.



- Specialised approved 4x4 tracks.
- Tracks open 365 days 7am-6pm
- Back-to-basics bush camping.
- Private campfire on all sites.
- 2 x Glamping Bell-tents.
- 3 Queen bed smaller tents.
- Self-contained cottage.

0458 406 236

wendy@scenicrimadventurepark.com.au

scenicrimadventurepark.com.au



SCENIC RIM MEMBERS

St Bernards Hotel



DESCRIPTION

St Bernards Hotel is situated amongst stunning gardens with spectacular views of the Gold Coast Hinterland. We specialise in customising each wedding we do to suit each couple. With our stunning Garden or Chapel ceremony locations and our Grand Marquee for your wedding reception you are spoilt for choice.

LOCATION

St Bernards Hotel is nestled in the Gold Coast Hinterland on Tamborine Mountain just 40mins from the Gold Coast and 1 hour from Brisbane.

FACILITIES

2 Ceremony locations to choose from – outdoor gardens or our Garden Chapel and a Grand Marquee for larger weddings and options for our more intimate affairs.

TARGET MARKET

We accommodate for any couple looking to hold a Ceremony and/or Reception at a great venue.



- Your Wedding, Your Way.
- We specialise everything, even down to the menu.
- We believe every wedding is different.
- Our dedicated award winning Wedding Coordinator works closely with you to plan your perfect day.

0417 802 157

weddings@stbernardshotel.com.au

stbernardshotel.com.au



Summer Land Camels



DESCRIPTION

Visit Summer Land Camels – Australia's largest Camel Dairy! This is a truly unique and memorable experience for people of all ages. Meet our gentle camels and enjoy the breathtaking scenery that surrounds our farm. Visit our Homestead Cafe where you can enjoy a meal and sample our award-winning Camel Milk products before browsing in our Farm Shop to check out our Camel Milk Skincare and Vodka. On our Farm Tours, you'll learn about all things camel and camel dairy. Get up close and personal with one of our riding camels during an interactive Camel Experience and enjoy riding our beloved camels – choose the unique Sunrise Camel Ride or try an introductory Camel Ride around our gardens. Don't forget your esky!

LOCATION

Located just off the Cunningham Highway near Harrisville, Summer Land Camels is only 45 minutes from Brisbane and just over an hour from Toowoomba and the Gold Coast.

FACILITIES

Open from 9am – 3pm every day. Pat and feed the friendly Camels. Enjoy breakfast or lunch at the café. Take a Farm Tour, Camel Ride or try the new Cameleer Experience.



CAMELS

- Free entry, open 9am to 3pm every day (closed some public holidays)
- Fun for the whole family, a unique paddock to plate experience
- See regenerative and sustainable agriculture in action
- Regular and must-do calendar of events and activities

07 5467 1707

info@summerlandcamels.com.au

summerlandcamels.com.au



SCENIC RIM MEMBERS

Tamborine Mountain Distillery



DESCRIPTION

Tamborine Mountain Distillery started the Queensland Craft Distilling industry three decades ago, and today has won more than 300 international medals, making it Australia's most awarded distillery and liquor brand of the new millennium.

Starting as a family owned business in 1993, the business has grown exponentially to become a fully functional distillery producing a range of fine liqueurs and spirits, including Australia's first premium Absinthe, handcrafted botanical gins and herbal liqueurs.

A visit to Tamborine Mountain Distillery is a journey through the art of distillation. The handcrafted process and passion for perfection ensures that each batch is made with dedication, care and precision.

LOCATION

Nestled in the Gold Coast Hinterland, Tamborine Mountain acts as a gateway to the picturesque Scenic Rim region, with beautiful walking trails, waterfalls and incredible local produce.

FACILITIES

Visitors can learn about the distilling process during a guided tour or chill out tasting award-winning liqueurs and spirits in a warm inviting atmosphere.



- Australia's most awarded distillery and liquor brand of the new millennium.
- Over 80 different Liqueurs & Spirits
- Guided walk through museum and working distillery

07 5545 3452

info@tamborinemountaindistillery.com

tamborinemountaindistillery.com



Tamborine Mountain Glades



DESCRIPTION

The quest for exceptional has broken new ground at Tamborine Mountain Glades. Earth friendly elegance surrounded by Thunderbird Park's untouched nature with something for everyone from on trend rooms to outstanding glamping, exquisite suites and lodges. Be part of the whole story and dine at Rainforest Restaurant & Lounge Bar with its seasonal flavours or the Terrace Café for a quick bite. As an award-winning conference and wedding destination, it has earned national, state and local accolades for excellence. This is a mountain retreat like no other – a gem that provides a getaway to reset, reconnect and revitalise!

LOCATION

Nestled in the heart of Tamborine Mountain, Tamborine Mountain Glades is less than an hour from both Brisbane and the Gold Coast. Escape to lush rainforest surroundings while staying close to world-class wineries, attractions, and adventure.

TARGET MARKET

Weddings, conferences, events, couples and families.

**TAMBORINE
MOUNTAIN
GLADES®**

- Accommodation options to suit all budgets
- Onsite restaurant and café
- Onsite adventure activities
- Onsite SOL Elements bathhouse.
- Private access to Cedar Creek rockpools and walking tracks
- Just 5km from the heart of Tamborine Mountain galleries, and local attractions

07 5545 7900

reception@tmglades.com.au

tamborinemountainglades.com.au



SCENIC RIM MEMBERS

The Kooralbyn Valley



DESCRIPTION

Getaway from the hustle and bustle and immerse yourself in the heart of the Scenic Rim. Enjoy the fresh air and a peaceful environment of Scenic Rim's largest accommodation provider, while staying in the Southern Hemisphere's largest rammed earth eco-construction complete with an award-winning pool and an indulgent spa.

The picturesque property is the perfect place for weddings, conferences, events, and dream holidays. Let us take you on a journey of the majestic wonders.

FACILITIES

Play amongst endless excitement with an array of activities from sky to water. Challenge yourself with the ultimate golfing experience on one of the country's finest championship golf courses. Enjoy a collection of complimentary activities including lawn bowls, mini-golf, tennis, boating and kids' bird, fish, turtle feeding. Get close to nature with an authentic outback farm experience.

TARGET MARKETS

A perfect place for families and couples alike The Kooralbyn Valley has something for everybody.



- The largest rammed earth eco-construction in the Southern Hemisphere on 800 acres.
- Championship golf, lawn bowl, putt-putt, tennis plus an array of activities from the sky to water, or get back to nature with an authentic outback farm experience.

07 5544 6688

info@thekooralbynvalley.com.au

thekooralbynvalley.com.au



Tuckeroo Cottages and Gardens



DESCRIPTION

Discover Mt Barney with Tuckeroo Cottages & Gardens – secluded accommodation including cabins and a house. Immerse yourself in this beautiful slice of the Scenic Rim, all within a 90 minute drive of Brisbane and Gold Coast. Panoramic views of Mt Barney and Mt Maroon form a superb backdrop for a keen photographers' masterpiece. Sit back and relax, stroll around the gardens, or explore the rugged remnant forest, ravines, sandstone boulders and rocky outcrops on the track down to the Logan River.

LOCATION

Situated just over an hour drive from Brisbane and the Gold Coast, Tuckeroo Cottages & Gardens is located just 10 minutes from the township of Rathdowney, in the heart of the Scenic Rim.

FACILITIES

Experience the ultimate retreat with our two cozy cabins and a spacious house that comes with a refreshing pool. Gather at the communal pavilion boasting an outdoor pizza oven, gas heaters, ample seating, and breathtaking mountain views.

For those seeking a more rustic experience, we offer a private camping ground at the rear of the property. Take leisurely bush walks down to the river or enjoy the tranquility of an outdoor fire pit with a picturesque view of the lake.

TARGET MARKETS

Our cabins accommodate two people and are perfect for couples looking for a romantic getaway. The house is ideal for large groups of families, sleeping 13 people.

We can accommodate wedding guests and general interest groups.



- Two self-contained cottages, each with a cozy fireplace and reverse cycle air conditioning.
- A large house sleeping 13, with wood fired fireplace, fully equipped kitchen and separate kids' zone.
- A large pool overlooks the stunning backdrop.

07 3040 8655

bookings@tuckeroocottages.com

tuckeroocottages.com



Two, three and four night Scenic Rim itineraries

With so much to uncover in this beautiful region, it's easy to feel overwhelmed with where to start!

We've made it easy with a few of our favourite itineraries.

Whether you decide to taste your way around the region, seek out an adventure or simply pat some friendly farm animals, you can find it all in the Scenic Rim.



A Slow Scenic Drive

2 night itinerary

Beaudesert to Kalbar via Farm Gates and Country Pubs

Boutique browsing, paddock-to-plate lunches and quiet country roads make this gentle Scenic Rim drive an ideal overnight escape.

Less than two hours from Brisbane, the Scenic Rim offers a softer version of a road trip — one where the pleasures are small but satisfying: a beautifully curated farm shop, a long lunch among the vines, a heritage country hotel and a quiet dam framed by mountains. This two-day loop from Beaudesert to Kalbar is designed for travellers who prefer browsing to bush-bashing, and lunches that linger well into the afternoon.

Day One

Beaudesert to Kalbar via Vineyards and Vintage Finds

Begin in Beaudesert, a classic country town with just enough polish to feel inviting without losing its rural heart. Make your first stop at The Pantry Vibe, a beautifully styled organic food and produce store where shelves are lined with small-batch condiments, artisanal pantry goods and gifts that feel far more considered than the average country souvenir.

Just down the road, The Drunken Farm Hand delivers a playful counterpoint — part farm store, part curiosity shop, the sort of finds that beg to be taken home.

From here, the drive opens into farmland and rolling hills as you make your way to The Roastbeef and the Frog at the Overflow Estate 1895 Vineyard for lunch. Set among vineyards with sweeping views across the valley, Overflow is the kind of place where lunch stretches lazily into the afternoon.

After lunch, continue the gentle drive north to Kalbar, a heritage town quietly reinventing itself as a destination for slow travellers. Spend the afternoon indulging in retail therapy at Wiss Emporium, a beautifully curated homewares and gift store that feels more country Hamptons than country Queensland, with linen, ceramics and thoughtful design pieces filling the airy interior.

For pure indulgence, check into Mount French Lodge, luxuriously set on a 100-acre escarpment with commanding views over the Scenic Rim landscape.



Roastbeef and the Frog



The Wiss Emporium

Day Two

Farm Gates, Flowers and Country Pub Lunch

Wake slowly and head out for brunch at the Scenic Rim Farm Shop and Café, a true paddock-to-plate experience showcasing produce grown in the surrounding region. Expect seasonal fruit, fresh baking, local cheeses and excellent coffee — all enjoyed under the Jacaranda trees.

Just nearby, wander through Elderflower Farm, a small, family-run flower farm where rows of blooms offer a gentle, sensory stroll and a chance to pick up botanical products, dried flowers or handmade soaps.

By late morning, make your way toward Aratula Hotel for lunch — a classic country pub done well. The menu is hearty, unfussy and comforting, the sort of food that feels exactly right after a morning of wandering and fresh air.

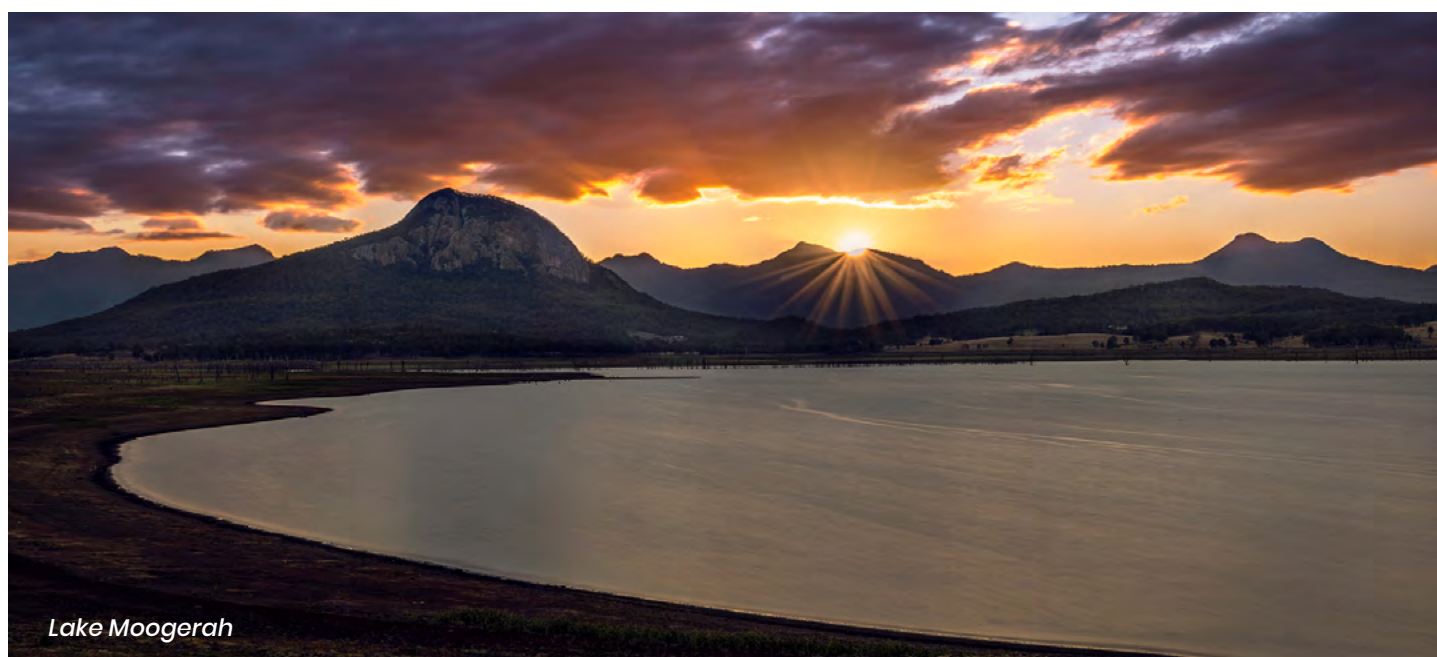
From Aratula, take the scenic drive to Lake Moogerah, where the road curves toward a wide, glassy dam framed by rugged peaks. Pull over, stretch your legs, breathe in the mountain air, stroll across the dam wall and enjoy one last pause before looping gently back to Kalbar and the journey home.



Scenic Rim Farm Shop & Café



Elderflower Farm



Lake Moogerah

The Cheese Pleaser

2 night itinerary



Day One

Summer Land Camels

Deliciousness is partly grown and partly made. It takes ingredients of an exceptional quality, creative minds and talented hands. The unmistakable old-world romance of the sunlight streaming through the vineyard, the flavours that make your eyebrows rise and the tangy cheeses best enjoyed over long afternoons of story-telling – this is the cheese pleaser itinerary.

Start your day an hour south west of Brisbane or 30 minutes from Boonah, Summer Land Camels produces award-winning camel milk cheese, gelato and a range of skincare. The camel farm offers a wide range of activities. Tours help you learn the story of camels in Australia's history, understand the process of milking and producing camel milk products, and get up close and personal with the stars of the show, the camels.

Venture a short distance down the road and stop for a cold bevvie and lunch at one of the most haunted hotels in the region, the Royal Harrisville Hotel.

Continue your adventure at The Scenic Rim Farm Shop and Café, where your tastebuds will guide your selection for afternoon tea. Nestled under towering 120-year-old Jacarandas and surrounded by working farms, enjoy exceptional local coffee and fresh flavour – take a stroll through the flower beds at the Elderflower Farm located on the same property.

When you're ready to lay your head down on a pillow, one of the region's most luxurious and romantic accommodation options awaits. Herrmann House offers an old-world sense of romance. The generous balcony opens to views of the sprawling farmland and stunning gardens, where you can settle in and enjoy the serenity.

Day Two

When breakfast rolls around, it's time to get nourished at Scenic Wandering Foods with beautiful plates of delicious vegan, vegetarian, paleo, dairy-free and gluten-free fare.

From here, venture to Towri Sheep Cheeses (open first Saturday of the month 9am-3pm), where the 300-acre dairy produces award-winning hand-crafted sheep milk cheeses. You can also cuddle their sheep and create your own sheep cheese platter.

Continue your adventure to Lake Wyaralong, where you'll be in awe of the expansive waters. Explore the lakes walking tracks before it's time to indulge at The Overflow Estate 1895. Once a cattle farm, this Estate is surrounded by water and rows of vines running down the hill.

Go all-out for your final night, staying at Wander at the Overflow 1895. The secluded accommodation offers you the chance to reconnect and experience the transformational power of travel.



The Overflow Estate 1895



Towri Sheep Cheeses

Day Three



Venturing home isn't all that bad when the smell of a homemade pastry lingers in the air. Stock up on some breakfast treats at Arthur Clives Bakery in Boonah, where you'll be spoilt with things to see and do.

Our final taste adventure takes us to the outskirts of Mt Alford to enjoy wine tasting with local larrikin Dave, under the trees at Bunjungen Vineyard. A short drive down the road Northview Highlands - a farm experience you will never forget. Enjoy a private tour, animal encounters and authentic country charm.



Northview Highlands

Hinterland Indulgence

2 night itinerary

Boutique stays, vineyard lunches, alpaca encounters and slow mornings in Queensland's green heart.

Tamborine Mountain has a way of slowing you down. The air is cooler, the roads wind gently through rainforest and farmland, and every stop feels like an invitation to linger. This three-day escape blends mountain luxury with country charm — pairing canopy views and cellar doors with alpacas, e-bikes and leisurely long lunches.



Day One

Country Charm and Vineyard Views

Begin your journey with a scenic drive through the rolling green hills of Canungra, a town that balances heritage character with quietly stylish retail.

Start with a browse through Canungra Books & Art, a delightful space where local artists, books and handcrafted gifts reflect the creative heart of the region. Just nearby, My Country Escape offers beautiful homewares and rural-inspired décor — perfect for finding something both thoughtful and practical to take home.

From here, continue on to Sarabah Estate Vineyard for lunch. Set beside the Albert River and framed by vineyards, Sarabah is known for its seasonal menus and relaxed long lunches that feel distinctly European in spirit but firmly local in flavour. Expect regional produce, estate wines and an atmosphere that encourages you to stay longer than planned.



My Country Escape



Mountview Alpaca Farm



Sarabah Estate Vineyard

In the afternoon, drive to Mountview Alpaca Farm for a gentle and unexpectedly joyful experience among their resident alpacas. Wander the paddocks, learn about the animals and perhaps meet an Alpaca or two before continuing on to O'Reilly's Canungra Valley Vineyards for a final tasting in the late afternoon sun.

By early evening, make your way up the mountain and check into a luxury escape with options of The Tamborine or Veranda House, some of the region's most luxurious retreats.

Dinner is an easy affair along the mountain's main street — choose from relaxed bistros, modern Australian dining or casual wine bars, all within strolling distance of your accommodation.

Day Two

E-Bikes, Picnics and Mountain Air

Wake slowly and head to Real Picnic Food Bar for breakfast — a local favourite known for fresh, generous plates and excellent coffee.

Directly across the road, pick up e-bikes from Peddly Picnic, along with a beautifully prepared grazing platter to take with you. Then set off along Tamborine's gentle roads and rainforest paths, stopping wherever the view looks too good to ignore. Find a shady picnic spot, enjoy your local cheeses and breads, and soak in the quiet beauty of the mountain at your own pace.

As evening falls, wander back along the main street for dinner — whether that's a refined dining room, a cosy wine bar or something casual and comforting. Tamborine Mountain does unpretentious dining particularly well.



Day Three

Your final day is yours to tailor

Indulge in retail therapy along the iconic Gallery Walk. Browse art galleries, craft studios, fudge and chocolate shops, bookshops and boutiques, stopping for coffee or lunch whenever the mood strikes.

For pure indulgence be sure not to miss Homeostasis Retreat or some time out at the Japanese inspired bathhouse, Sol located at Tamborine Mountain Glades



Adventures on Tamborine Mountain

3 night itinerary

Your next adventure awaits

Just an hour from Brisbane or the Gold Coast, Tamborine Mountain feels like a world away. Up here, the air is cooler, the pace slows and the rainforest wraps around you like a soft green blanket. It's a place made for lingering lunches, leafy walks and fireside dinners — and it lends itself beautifully to a long weekend escape.

This three-day itinerary is for the adventurous, whilst balancing the mountain's natural beauty with its best food, wine and stays.



Tamborine Rainforest Skywalk

Day One

Rainforest Canopies and Rainforest Walks

Arrive late morning and ease into mountain life with a scenic drive through gum trees and rolling paddocks before checking in at Tamborine Mountain Glades, a peaceful retreat tucked into the rainforest.

Your first stop is high above the forest floor at TreeTop Challenge Tamborine Mountain, where zip lines and rope bridges weave through the canopy. It's exhilarating without being overwhelming — and a wonderful way to immerse yourself in the landscape from a different perspective.

Afterwards, slow things down with short drive up the mountain to visit Tamborine Rainforest Skywalk one of Tamborine Mountain's most popular nature-based attractions, offering visitors a unique way to explore subtropical rainforest from both forest floor trails and elevated canopy walkways.

Later in the afternoon, wander through Thunderbird Park at Tamborine Mountain Glades, where you can fossick for thundereggs, explore rock pools or entertain the kids at Digit.

As evening falls, head to St Bernard's Hotel, a mountain institution known for its sweeping valley views and relaxed pub fare. Watch the sky turn soft pink over the hinterland before returning to your rainforest hideaway for the night.

Day Two

Hinterland Flavours and Hidden Pools

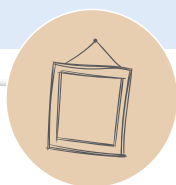
Head up to Main Street for Breakfast at the Real Picnic Food Bar. Check out and leave the driving to someone else with a Pineapple Tours or Cork 'n Fork experience — an easy, sociable way to explore the mountain's wine and craft beer scene.

Tours typically include stops at Witches Falls Winery, Cedar Creek Estate and Boxer Brewing, with tastings paired with stories about the region's producers, its volcanic soils and its slow-growing reputation as a boutique food and drink destination. Tamborine Mountain Distillery, home to one of Australia's most awarded boutique spirit producers. Tastings are generous and informal, and the shelves are filled with beautifully packaged local liqueurs and gin — perfect souvenirs to take home.

Don't miss an afternoon at The Cauldron where you can apply your skills as a gin mixologist.



Day Three



Waterfalls, Art and a Gentle Farewell

Start your final day with one of Tamborine's signature walks to Curtis Falls, a shaded rainforest trail that ends in a picturesque cascade framed by tree ferns and vines. If time allows, continue to nearby Witches Falls, where the forest feels deeper, cooler and wonderfully still.

Then it's time for a wander along the mountain's much-loved Gallery Walk. Take your time browsing art galleries, craft stores, fudge and chocolate shops, and cafés serving long breakfasts and good coffee.

When you've wrapped up your holiday finish off with lunch or a donkey picnic at the Bearded Dragon.



Wonders of Life

3 night itinerary



Day One

In a place where the only traffic jam is caused by dairy cows crossing the road at milking time, you'll truly feel like you've entered another world. We begin just 15 minutes south of Beaudesert in Kerry.

Take your time exploring the wonderful Green Mountains Section of Lamington National Park, complete with lush rainforests and ancient trees. Become a bushwalker and tackle the long list of hikes and walks which await that catering to all experience levels.

The region offers a choice of camping and caravanning options. From creek side camping at Kerry Valley Secret to 4 wheel drive adventures at Scenic Rim Adventure Park.



Day Two

Venture up to Beaudesert, where an array of cafes will have you torn for choice!

Once your tummy is full of hot coffee and a delicious breakfast, you're ready to explore the beauty of Beaudesert.

Visit one of the largest country town museums in Queensland, which also happens to be a favourite photographic opportunity for visitors. Pop into The Logan and Albert at Beaudesert for a local lunch experience, where you'll discover the genuine heart of Beaudesert folk.

Spend your afternoon relaxing at Darlington Park, a short drive south of Beaudesert. Simply relax and take in your surroundings or take it all in on horse back with a leisurely ride. Lamington National Park has so much to offer. As the day draws to an end, retire to Worendo Cottages where you'll overlook World Heritage Rainforest Mountains in a peaceful wilderness setting.

As the day draws to an end, retire to Worendo Cottages where you'll overlook World Heritage Rainforest Mountains in a peaceful wilderness setting.



Day Three

It's time to embark on a journey to Mount Barney National Park, where majestic mountain peaks tower above the clouds and overlook the ancient Gondwana Rainforests that envelop the surroundings. Within the park, seven iconic mountain peaks await, each harboring a rich tapestry of landscapes, ecosystems, and an abundance of both common and rare animal species.

If you'd like to spend more time exploring Mount Barney, you'll find diverse accommodation at Mt Barney Lodge or Biggriggen Camp Ground. Discover their year-round program of guided adventure activities, including archery, rock climbing, kids workshops and more. Next, we head north east through to Rathdowney. History enthusiasts can delve into the village's fascinating past and gain insights into its milling industry, dairy industry, and the lives of its residents by visiting the Rathdowney Museum.

You'll need a 4WD as we arrive at the Scenic Rim Adventure Park to the north of Rathdowney. Here you can explore 28km of off-road driving tracks and trails for 4WD enthusiasts, mountain bikers and bush walkers alike. For those wanting to build their skills, you can take a 4WD awareness course.

When you start feeling peckish stop in at the quaint Rathy Pub, where you'll experience traditional country pub hospitality. As the day draws to an end, stay in complete bliss at Barney Creek Vineyard Cottages, where you'll have your choice of five unique accommodation options.



Day Four

Enhance your Scenic Rim experience by immersing yourself in the abundance of culinary delights in Boonah. Begin your day with a scrumptious breakfast at the beloved Arthur Clive Bakery Café, known for its delectable treats. When it's time for lunch, head southwest to a picturesque lavender farm and vineyard. Kooroomba offers a serene retreat amidst expansive fields of purple, complemented by a charming vineyard, restaurant and gift store.

The Green Heart of Lamington National Park

4 night itinerary

Binna Burra, Beechmont and O'Reilly's deliver one of Queensland's most restorative escapes — a place where rainforest replaces reception bars and time is measured in birdsong and mist.

Lamington National Park is not somewhere you rush. The road climbs slowly, the forest thickens, and by the time you reach the mountain's edge, the modern world already feels distant. Over four days, this journey between Binna Burra and O'Reilly's reveals the quiet power of the Gold Coast hinterland — a place of ancient trees, cool mountain air and carefully placed comforts.



Day One

Binna Burra and the Art of Arrival

The approach to Binna Burra Lodge is a gentle recalibration. Eucalypt forest gives way to subtropical rainforest, and suddenly the temperature drops and the air feels cleaner. Set on the edge of Lamington National Park, Binna Burra has long been the threshold between civilisation and wilderness.

Spend the afternoon walking directly from the lodge into the forest. Trails loop through strangler figs and Antarctic beech, opening occasionally to lookouts across the Numinbah Valley. These first walks aren't about distance — they're about transition.

As evening settles in, the lodge becomes a refuge: warm light, quiet conversations, dinner with valley views and the deep comfort of falling asleep to forest sounds.



Binna Burra Lodge

Day Two

Adrenalin Rush, Vineyards and a New Perspective

Morning brings mist drifting through the canopy. After breakfast, descend toward the valley for a visit to Happitat — not for the faint hearted. Experience the highest and longest zipline! Soar 400 metres above pristine National Park at exhilarating speeds, gliding across the entire cliff face..

Day Three

From the forest floor to rolling green hills, the contrast at Beechmont Estate is immediate. This elegant estate offers long, unhurried lunches with panoramic views and a menu that celebrates local produce. It's the kind of place where conversation softens, glasses refill easily and the afternoon drifts.





Day Four

Walking the World Heritage Rainforest

An early departure towards Canungra where you'll find great coffee before ascending to towards O'Reilly's Rainforest Retreat, set deep within the Laington National Park. Arrival feels like entering a natural sanctuary. Check in, wander the grounds, feed the crimson rosellas at dusk and watch cloud shadow slide across distant ranges.

With O'Reilly's as your base, the forest is your playground — but in the gentlest sense.

Begin with the iconic Tree Top Walk, a series of suspended bridges that reveal the canopy's quiet life: lichen, moss, tiny orchids and birds moving almost invisibly through the leaves.

Later, follow shaded trails to waterfalls such as Elabana Falls, where water slips over rock ledges into cool pools framed by moss and fern. Walk slowly. Sit often. This landscape rewards stillness.

Lunch can be simple — a café meal or picnic — and the afternoon is best left open for rest, reading, or a final wander before evening settles once more over the retreat.

Stay as long as you like!



Scenic Rim

MEDIA KIT & TRADE MANUAL 2026



Destination
Scenic Rim

SCENIC RIM
REGIONAL COUNCIL

destinationscenicrim.com



This document was developed with the joint support of the Australian Government and Queensland Government in association with Scenic Rim Regional Council and Destination Scenic Rim Inc. Although funding for this product has been provided by both the Australian and Queensland Governments, the material contained herein does not necessarily represent the views of either Government.

Scenic Rim Media Kit & Trade Manual 2026 has been produced by Destination Scenic Rim Inc. PO Box 184 Boonah QLD 4310