

Scenic Rim

DRIVE ITINERARIES

Two, three and four night Scenic Rim itineraries

With so much to uncover in this beautiful region, it's easy to feel overwhelmed with where to start!

We've made it easy with a few of our favourite itineraries.

Whether you decide to taste your way around the region, seek out an adventure or simply pat some friendly farm animals, you can find it all in the Scenic Rim.



A Slow Scenic Drive

2 night itinerary

Beaudesert to Kalbar via Farm Gates and Country Pubs

Boutique browsing, paddock-to-plate lunches and quiet country roads make this gentle Scenic Rim drive an ideal overnight escape.

Less than two hours from Brisbane, the Scenic Rim offers a softer version of a road trip — one where the pleasures are small but satisfying: a beautifully curated farm shop, a long lunch among the vines, a heritage country hotel and a quiet dam framed by mountains. This two-day loop from Beaudesert to Kalbar is designed for travellers who prefer browsing to bush-bashing, and lunches that linger well into the afternoon.

Day One

Beaudesert to Kalbar via Vineyards and Vintage Finds

Begin in Beaudesert, a classic country town with just enough polish to feel inviting without losing its rural heart. Make your first stop at The Pantry Vibe, a beautifully styled organic food and produce store where shelves are lined with small-batch condiments, artisanal pantry goods and gifts that feel far more considered than the average country souvenir.

Just down the road, The Drunken Farm Hand delivers a playful counterpoint — part farm store, part curiosity shop, the sort of finds that beg to be taken home.

From here, the drive opens into farmland and rolling hills as you make your way to The Roastbeef and the Frog at the Overflow Estate 1895 Vineyard for lunch. Set among vineyards with sweeping views across the valley, Overflow is the kind of place where lunch stretches lazily into the afternoon.

After lunch, continue the gentle drive north to Kalbar, a heritage town quietly reinventing itself as a destination for slow travellers. Spend the afternoon indulging in retail therapy at Wiss Emporium, a beautifully curated homewares and gift store that feels more country Hamptons than country Queensland, with linen, ceramics and thoughtful design pieces filling the airy interior.

For pure indulgence, check into Mount French Lodge, luxuriously set on a 100-acre escarpment with commanding views over the Scenic Rim landscape.



Roastbeef and the Frog



The Wiss Emporium

Day Two

Farm Gates, Flowers and Country Pub Lunch

Wake slowly and head out for brunch at the Scenic Rim Farm Shop and Café, a true paddock-to-plate experience showcasing produce grown in the surrounding region. Expect seasonal fruit, fresh baking, local cheeses and excellent coffee — all enjoyed under the Jacaranda trees.

Just nearby, wander through Elderflower Farm, a small, family-run flower farm where rows of blooms offer a gentle, sensory stroll and a chance to pick up botanical products, dried flowers or handmade soaps.

By late morning, make your way toward Aratula Hotel for lunch — a classic country pub done well. The menu is hearty, unfussy and comforting, the sort of food that feels exactly right after a morning of wandering and fresh air.

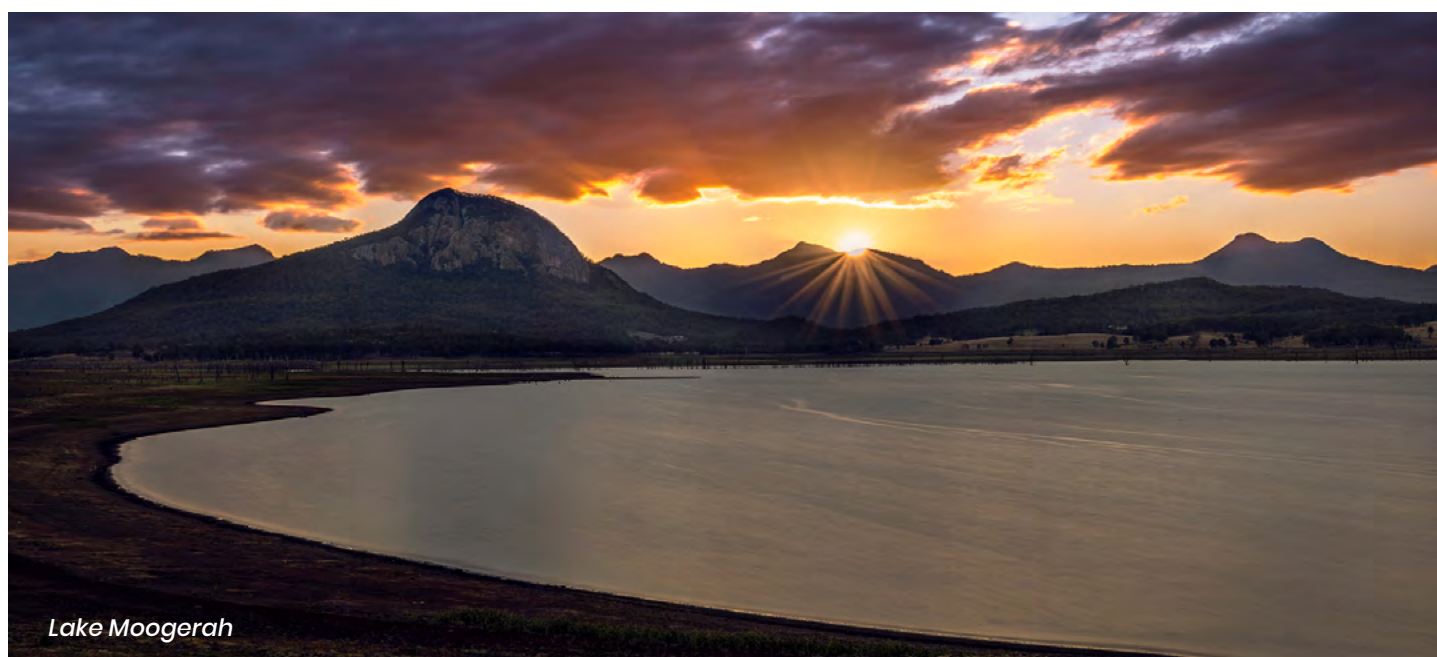
From Aratula, take the scenic drive to Lake Moogerah, where the road curves toward a wide, glassy dam framed by rugged peaks. Pull over, stretch your legs, breathe in the mountain air, stroll across the dam wall and enjoy one last pause before looping gently back to Kalbar and the journey home.



Scenic Rim Farm Shop & Café



Elderflower Farm



Lake Moogerah

The Cheese Pleaser

2 night itinerary



Day One

Summer Land Camels

Deliciousness is partly grown and partly made. It takes ingredients of an exceptional quality, creative minds and talented hands. The unmistakable old-world romance of the sunlight streaming through the vineyard, the flavours that make your eyebrows rise and the tangy cheeses best enjoyed over long afternoons of story-telling – this is the cheese pleaser itinerary.

Start your day an hour south west of Brisbane or 30 minutes from Boonah, Summer Land Camels produces award-winning camel milk cheese, gelato and a range of skincare. The camel farm offers a wide range of activities. Tours help you learn the story of camels in Australia's history, understand the process of milking and producing camel milk products, and get up close and personal with the stars of the show, the camels.

Venture a short distance down the road and stop for a cold bevvy and lunch at one of the most haunted hotels in the region, the Royal Harrisville Hotel.

Continue your adventure at The Scenic Rim Farm Shop and Café, where your tastebuds will guide your selection for afternoon tea. Nestled under towering 120-year-old Jacarandas and surrounded by working farms, enjoy exceptional local coffee and fresh flavour – take a stroll through the flower beds at the Elderflower Farm located on the same property.

When you're ready to lay your head down on a pillow, one of the region's most luxurious and romantic accommodation options awaits. Herrmann House offers an old-world sense of romance. The generous balcony opens to views of the sprawling farmland and stunning gardens, where you can settle in and enjoy the serenity.

Day Two

When breakfast rolls around, it's time to get nourished at Scenic Wandering Foods with beautiful plates of delicious vegan, vegetarian, paleo, dairy-free and gluten-free fare.

From here, venture to Towri Sheep Cheeses (open first Saturday of the month 9am-3pm), where the 300-acre dairy produces award-winning hand-crafted sheep milk cheeses. You can also cuddle their sheep and create your own sheep cheese platter.

Continue your adventure to Lake Wyaralong, where you'll be in awe of the expansive waters. Explore the lakes walking tracks before it's time to indulge at The Overflow Estate 1895. Once a cattle farm, this Estate is surrounded by water and rows of vines running down the hill.

Go all-out for your final night, staying at Wander at the Overflow 1895. The secluded accommodation offers you the chance to reconnect and experience the transformational power of travel.



The Overflow Estate 1895



Towri Sheep Cheeses

Day Three



Venturing home isn't all that bad when the smell of a homemade pastry lingers in the air. Stock up on some breakfast treats at Arthur Clives Bakery in Boonah, where you'll be spoilt with things to see and do.

Our final taste adventure takes us to the outskirts of Mt Alford to enjoy wine tasting with local larrikin Dave, under the trees at Bunjungen Vineyard. A short drive down the road Northview Highlands - a farm experience you will never forget. Enjoy a private tour, animal encounters and authentic country charm.



Northview Highlands

Hinterland Indulgence

2 night itinerary

Boutique stays, vineyard lunches, alpaca encounters and slow mornings in Queensland's green heart.

Tamborine Mountain has a way of slowing you down. The air is cooler, the roads wind gently through rainforest and farmland, and every stop feels like an invitation to linger. This three-day escape blends mountain luxury with country charm — pairing canopy views and cellar doors with alpacas, e-bikes and leisurely long lunches.



Day One

Country Charm and Vineyard Views

Begin your journey with a scenic drive through the rolling green hills of Canungra, a town that balances heritage character with quietly stylish retail.

Start with a browse through Canungra Books & Art, a delightful space where local artists, books and handcrafted gifts reflect the creative heart of the region. Just nearby, My Country Escape offers beautiful homewares and rural-inspired décor — perfect for finding something both thoughtful and practical to take home.

From here, continue on to Sarabah Estate Vineyard for lunch. Set beside the Albert River and framed by vineyards, Sarabah is known for its seasonal menus and relaxed long lunches that feel distinctly European in spirit but firmly local in flavour. Expect regional produce, estate wines and an atmosphere that encourages you to stay longer than planned.



My Country Escape



Mountview Alpaca Farm



Sarabah Estate Vineyard

In the afternoon, drive to Mountview Alpaca Farm for a gentle and unexpectedly joyful experience among their resident alpacas. Wander the paddocks, learn about the animals and perhaps meet an Alpaca or two before continuing on to O'Reilly's Canungra Valley Vineyards for a final tasting in the late afternoon sun.

By early evening, make your way up the mountain and check into a luxury escape with options of The Tamborine or Veranda House, some of the region's most luxurious retreats.

Dinner is an easy affair along the mountain's main street — choose from relaxed bistros, modern Australian dining or casual wine bars, all within strolling distance of your accommodation.

Day Two

E-Bikes, Picnics and Mountain Air

Wake slowly and head to Real Picnic Food Bar for breakfast — a local favourite known for fresh, generous plates and excellent coffee.

Directly across the road, pick up e-bikes from Peddly Picnic, along with a beautifully prepared grazing platter to take with you. Then set off along Tamborine's gentle roads and rainforest paths, stopping wherever the view looks too good to ignore. Find a shady picnic spot, enjoy your local cheeses and breads, and soak in the quiet beauty of the mountain at your own pace.

As evening falls, wander back along the main street for dinner — whether that's a refined dining room, a cosy wine bar or something casual and comforting. Tamborine Mountain does unpretentious dining particularly well.



Day Three

Your final day is yours to tailor

Indulge in retail therapy along the iconic Gallery Walk. Browse art galleries, craft studios, fudge and chocolate shops, bookshops and boutiques, stopping for coffee or lunch whenever the mood strikes.

For pure indulgence be sure not to miss Homeostasis Retreat or some time out at the Japanese inspired bathhouse, Sol located at Tamborine Mountain Glades



Adventures on Tamborine Mountain

3 night itinerary

Your next adventure awaits

Just an hour from Brisbane or the Gold Coast, Tamborine Mountain feels like a world away. Up here, the air is cooler, the pace slows and the rainforest wraps around you like a soft green blanket. It's a place made for lingering lunches, leafy walks and fireside dinners — and it lends itself beautifully to a long weekend escape.

This three-day itinerary is for the adventurous, whilst balancing the mountain's natural beauty with its best food, wine and stays.



Tamborine Rainforest Skywalk

Day One

Rainforest Canopies and Rainforest Walks

Arrive late morning and ease into mountain life with a scenic drive through gum trees and rolling paddocks before checking in at Tamborine Mountain Glades, a peaceful retreat tucked into the rainforest.

Your first stop is high above the forest floor at TreeTop Challenge Tamborine Mountain, where zip lines and rope bridges weave through the canopy. It's exhilarating without being overwhelming — and a wonderful way to immerse yourself in the landscape from a different perspective.

Afterwards, slow things down with short drive up the mountain to visit Tamborine Rainforest Skywalk one of Tamborine Mountain's most popular nature-based attractions, offering visitors a unique way to explore subtropical rainforest from both forest floor trails and elevated canopy walkways.

Later in the afternoon, wander through Thunderbird Park at Tamborine Mountain Glades, where you can fossick for thundereggs, explore rock pools or entertain the kids at Digit.

As evening falls, head to St Bernard's Hotel, a mountain institution known for its sweeping valley views and relaxed pub fare. Watch the sky turn soft pink over the hinterland before returning to your rainforest hideaway for the night.

Day Two

Hinterland Flavours and Hidden Pools

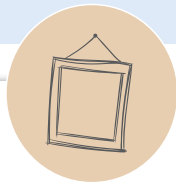
Head up to Main Street for Breakfast at the Real Picnic Food Bar. Check out and leave the driving to someone else with a Pineapple Tours or Cork 'n Fork experience — an easy, sociable way to explore the mountain's wine and craft beer scene.

Tours typically include stops at Witches Falls Winery, Cedar Creek Estate and Boxer Brewing, with tastings paired with stories about the region's producers, its volcanic soils and its slow-growing reputation as a boutique food and drink destination. Tamborine Mountain Distillery, home to one of Australia's most awarded boutique spirit producers. Tastings are generous and informal, and the shelves are filled with beautifully packaged local liqueurs and gin — perfect souvenirs to take home.

Don't miss an afternoon at The Cauldron where you can apply your skills as a gin mixologist.



Day Three



Waterfalls, Art and a Gentle Farewell

Start your final day with one of Tamborine's signature walks to Curtis Falls, a shaded rainforest trail that ends in a picturesque cascade framed by tree ferns and vines. If time allows, continue to nearby Witches Falls, where the forest feels deeper, cooler and wonderfully still.

Then it's time for a wander along the mountain's much-loved Gallery Walk. Take your time browsing art galleries, craft stores, fudge and chocolate shops, and cafés serving long breakfasts and good coffee.

When you've wrapped up your holiday finish off with lunch or a donkey picnic at the Bearded Dragon.



Wonders of Life

3 night itinerary



Day One

In a place where the only traffic jam is caused by dairy cows crossing the road at milking time, you'll truly feel like you've entered another world. We begin just 15 minutes south of Beaudesert in Kerry.

Take your time exploring the wonderful Green Mountains Section of Lamington National Park, complete with lush rainforests and ancient trees. Become a bushwalker and tackle the long list of hikes and walks which await that catering to all experience levels.

The region offers a choice of camping and caravanning options. From creek side camping at Kerry Valley Secret to 4 wheel drive adventures at Scenic Rim Adventure Park.



Day Two

Venture up to Beaudesert, where an array of cafes will have you torn for choice!

Once your tummy is full of hot coffee and a delicious breakfast, you're ready to explore the beauty of Beaudesert.

Visit one of the largest country town museums in Queensland, which also happens to be a favourite photographic opportunity for visitors. Pop into The Logan and Albert at Beaudesert for a local lunch experience, where you'll discover the genuine heart of Beaudesert folk.

Spend your afternoon relaxing at Darlington Park, a short drive south of Beaudesert. Simply relax and take in your surroundings or take it all in on horse back with a leisurely ride. Lamington National Park has so much to offer. As the day draws to an end, retire to Worendo Cottages where you'll overlook World Heritage Rainforest Mountains in a peaceful wilderness setting.

As the day draws to an end, retire to Worendo Cottages where you'll overlook World Heritage Rainforest Mountains in a peaceful wilderness setting.



Day Three

It's time to embark on a journey to Mount Barney National Park, where majestic mountain peaks tower above the clouds and overlook the ancient Gondwana Rainforests that envelop the surroundings. Within the park, seven iconic mountain peaks await, each harboring a rich tapestry of landscapes, ecosystems, and an abundance of both common and rare animal species.

If you'd like to spend more time exploring Mount Barney, you'll find diverse accommodation at Mt Barney Lodge or Biggriggen Camp Ground. Discover their year-round program of guided adventure activities, including archery, rock climbing, kids workshops and more. Next, we head north east through to Rathdowney. History enthusiasts can delve into the village's fascinating past and gain insights into its milling industry, dairy industry, and the lives of its residents by visiting the Rathdowney Museum.

You'll need a 4WD as we arrive at the Scenic Rim Adventure Park to the north of Rathdowney. Here you can explore 28km of off-road driving tracks and trails for 4WD enthusiasts, mountain bikers and bush walkers alike. For those wanting to build their skills, you can take a 4WD awareness course.

When you start feeling peckish stop in at the quaint Rathy Pub, where you'll experience traditional country pub hospitality. As the day draws to an end, stay in complete bliss at Barney Creek Vineyard Cottages, where you'll have your choice of five unique accommodation options.



Day Four

Enhance your Scenic Rim experience by immersing yourself in the abundance of culinary delights in Boonah. Begin your day with a scrumptious breakfast at the beloved Arthur Clive Bakery Café, known for its delectable treats. When it's time for lunch, head southwest to a picturesque lavender farm and vineyard. Kooroomba offers a serene retreat amidst expansive fields of purple, complemented by a charming vineyard, restaurant and gift store.

The Green Heart of Lamington National Park

4 night itinerary

Binna Burra, Beechmont and O'Reilly's deliver one of Queensland's most restorative escapes — a place where rainforest replaces reception bars and time is measured in birdsong and mist.

Lamington National Park is not somewhere you rush. The road climbs slowly, the forest thickens, and by the time you reach the mountain's edge, the modern world already feels distant. Over four days, this journey between Binna Burra and O'Reilly's reveals the quiet power of the Gold Coast hinterland — a place of ancient trees, cool mountain air and carefully placed comforts.



Day One

Binna Burra and the Art of Arrival

The approach to Binna Burra Lodge is a gentle recalibration. Eucalypt forest gives way to subtropical rainforest, and suddenly the temperature drops and the air feels cleaner. Set on the edge of Lamington National Park, Binna Burra has long been the threshold between civilisation and wilderness.

Spend the afternoon walking directly from the lodge into the forest. Trails loop through strangler figs and Antarctic beech, opening occasionally to lookouts across the Numinbah Valley. These first walks aren't about distance — they're about transition.

As evening settles in, the lodge becomes a refuge: warm light, quiet conversations, dinner with valley views and the deep comfort of falling asleep to forest sounds.



Day Two

Adrenalin Rush, Vineyards and a New Perspective

Morning brings mist drifting through the canopy. After breakfast, descend toward the valley for a visit to Happitat — not for the faint hearted. Experience the highest and longest zipline! Soar 400 metres above pristine National Park at exhilarating speeds, gliding across the entire cliff face..

Day Three

From the forest floor to rolling green hills, the contrast at Beechmont Estate is immediate. This elegant estate offers long, unhurried lunches with panoramic views and a menu that celebrates local produce. It's the kind of place where conversation softens, glasses refill easily and the afternoon drifts.





Day Four

Walking the World Heritage Rainforest

An early departure towards Canungra where you'll find great coffee before ascending to towards O'Reilly's Rainforest Retreat, set deep within the Laington National Park. Arrival feels like entering a natural sanctuary. Check in, wander the grounds, feed the crimson rosellas at dusk and watch cloud shadow slide across distant ranges.

With O'Reilly's as your base, the forest is your playground — but in the gentlest sense.

Begin with the iconic Tree Top Walk, a series of suspended bridges that reveal the canopy's quiet life: lichen, moss, tiny orchids and birds moving almost invisibly through the leaves.

Later, follow shaded trails to waterfalls such as Elabana Falls, where water slips over rock ledges into cool pools framed by moss and fern. Walk slowly. Sit often. This landscape rewards stillness.

Lunch can be simple — a café meal or picnic — and the afternoon is best left open for rest, reading, or a final wander before evening settles once more over the retreat.

Stay as long as you like!



Destination Scenic Rim



destinationscenierim.com

Scenic Rim Drive Itineraries 2026 has been produced by Destination Scenic Rim Inc. PO Box 184 Boonah QLD 4310